



THE PROJECT

The Guar and Lula NE EPCI projects consist of the development of two fields in the Pre-Salt area in 2200m water depth. Each field comprises one Floating Production Storage and Offloading vessel and two Buoyancy Supported Risers (BSRs) systems.

The Steel Catenary Risers (SCRs) and umbilical risers are supported in a single catenary configuration from the seabed to the BSR unit. Flexible jumpers connect the BSR units to the FPSO and Flexible flow lines connect the SCRs to the well heads.

AQUATIC'S ROLE

As part of the work scope Aquatic provided a 200te modular reel drive system (AQPR-08E-200), complete with power pack, control cabin and ancillary support equipment. In addition, Aquatic supplied a reel skidding drive system, which was custom-designed and fabricated specifically for this project. The skidding system effectively locked the reel drive system in position for the transpooling operations on board the Seven Polaris. 32 spiral strand wire tethers, each at nearly 2,000m long were installed using the modular drive system.

THE EQUIPMENT

The reel skidding drive system was fabricated and designed by Aquatic and one of their suppliers. Like all Aquatic equipment, the reel skidding drive system is modular to make its transportation and subsequent build extremely simple.

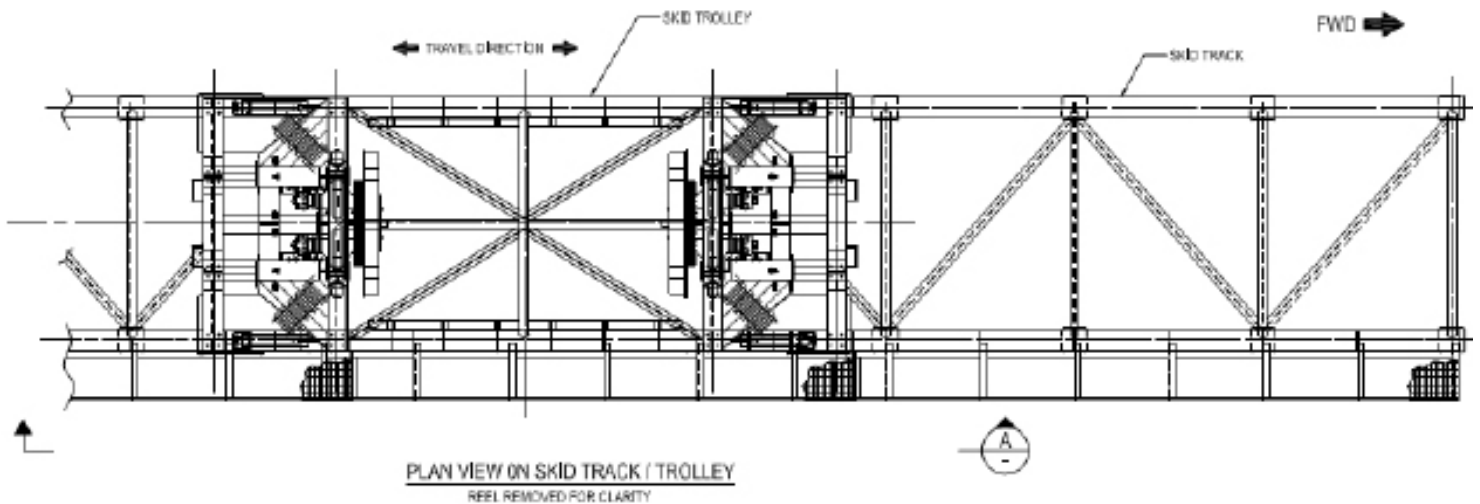
The reel skidding drive system formed an integral part of the project, and was operated by a team of experienced Aquatic offshore technicians.

MOBILISATIONS AND OPERATIONS

The reel drive system and the reel skidding drive system were shipped to Brazil in February 2013. Both were assembled on location and commissioned and function-tested over the next two months, before operations commenced on board the Seven Polaris in May 2013. The reel drive system and the reel skidding drive system were operational over the next 11 months until March 2014, when operations concluded and the reel drive system was demobilised.

During the project period, the reel drive and reel skidding systems were fully operational and reported little or no downtime, demonstrating the reliability and customer peace of mind when choosing to work with Aquatic.

The sketch below details the interface between the reel drive system and the reel skidding drive systems.



STRENGTH IN DEPTH

It is strength in depth that sums up what Aquatic is about. It's our equipment range and the acknowledged, proven expertise and experience we have in abundance. It's reflected in our technical skill and SURF knowledge and the quality of local personnel we use on projects around the globe. We work safely, and we do not take unnecessary risks on any operation we're involved with.

This strength in depth means we're dependable and our customers enjoy working with us, time and again.

ABOUT SUBSEA 7

Subsea 7 is one of the world's leading global contractors in seabed-to-surface engineering, construction and services to the offshore industry, providing technical solutions to enable the delivery of complex projects in all water depths and challenging environments.

subsea 7



The Americas | Europe, Middle East & Africa | Asia Pacific

info@aquaticsubsea.com

an **ACTEON** company